



# The Good Lab

2501 W Colorado Ave Suite 204  
 Colorado Springs, CO 80904  
 (720) 245-8323  
 Info@GoodLabColorado.com  
 www.GoodLabColorado.com

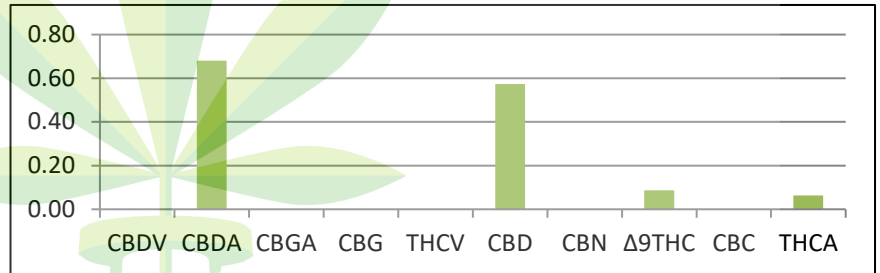
## Potency Analysis

<b>Customer ID</b>	861	<b>Customer Name</b>	Hempy Llama Tea Company		
<b>Sample ID</b>	2100554	<b>Sample Name</b>	Electra Full Spectrum		
<b>Sample Type</b>	Oil	<b>Date Received</b>	4/26/2021	<b>Date Completed</b>	4/28/2021

Cannabinoid Profile %	
CBDV	0.00
CBDA	0.68
CBGA	0.00
CBG	0.00
THCV	0.00
CBD	0.57
CBN	0.00
Δ9THC	0.09
CBC	0.00
THCA	0.06
<b>TOTAL</b>	<b>1.41</b>

<b>Total THC % (Δ9-THC + THC-A + THC-V)</b>	0.15
<b>Total CBD % (CBD + CBD-A + CBD-V)</b>	1.25
<b>Total Cannabinoid %</b>	1.41

<b>THCmg/ml/pkg*</b>	1.43
<b>CBDmg/ml/pkg*</b>	11.94
<b>TOTmg/ml/pkg*</b>	13.47



**Total THC** = Δ9-THC + THC-A + THC-V  
**Total CBD** = CBD + CBD-A + CBD-V  
**Total Cannabinoids** represents the sum of the cannabinoids detected in the sample.  
**\*Mg/ml/Pkg** is calculated based on the mass/density of the dominant suspension or the total fill weight of the package if known.

Potency test results are reported in percentage by dry weight using High Performance Liquid Chromatography (HPLC). Detectable amounts below .06% are shown as Below Level of Quantitation (<LOQ). Our standard detection limit is .02%. Results below .02% are considered unreliable and are reported as trace (TR). Our deviation is within the industry standard for HPLC.

**NOTES**  
 Mg/ml were calculated based on the density of MCT = .955g/ml

### FINAL APPROVAL

<b>Analysis:</b> Gregory P. Duran, Lab Owner 	<b>Quality Control:</b> M. Teri Robnett, Lab Manager 
--	--

Thank you for choosing **The Good Lab** for your analytical needs. This report outlines the results of your product analysis. If you have any further questions regarding your product, feel free to contact us for a consultation at (720) 245-8323 or info@goodlabcolorado.com.

**This report and all information herein shall not be changed in any way or reproduced, except in its entirety, without the expressed consent of The Good Lab.** This information is provided as a service and makes no claims of efficacy, safety or compliance of this product. Results are applicable only for the sample as presented and for the specific test conducted. Due to many factors outside The Good Lab's control, results may vary; therefore, we adhere to the cannabis analytical laboratory standard of error of +/- 5%. Cannabinoid content variations may be due to natural variations in the plant and/or inaccurate sampling practices. This report is for informational purposes only and should not be used to diagnose, treat or prevent any medical symptoms or conditions. The statements and results herein have not been approved or endorsed by the FDA. Results are applicable only for the sample supplied to The Good Lab.