



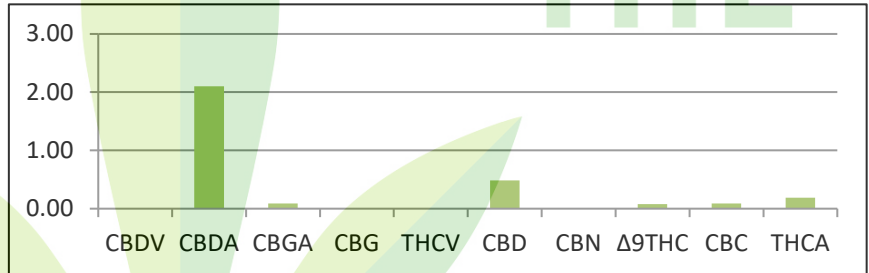
The Good Lab

2501 W Colorado Ave Suite 204
Colorado Springs, CO 80904
(720) 245-8323
Info@GoodLabColorado.com
www.GoodLabColorado.com

Potency Analysis

Customer ID	861	Cust Name	Hempy Llama Tea Company		
Sample ID	2000850	Date Received	Vanilla Chai Tea		
Sample Type	Tea Blend	Date Received	8/11/2020	Date Completed	8/17/2020

Cannabinoid Profile %	
CBDV	0.00
CBDA	2.10
CBGA	0.09
CBG	<LOQ
THCV	0.00
CBD	0.49
CBN	0.00
Δ9THC	0.08
CBC	0.09
THCA	0.19
TOTAL	3.04



Total THC % (Δ9-THC + THC-A + THC-V)	0.27
Total CBD % (CBD + CBD-A + CBD-V)	2.59
Total Cannabinoid %	3.04
Potential Active Δ9-THC*	0.24

Total THC = Δ9-THC + THC-A + THC-V
Total CBD = CBD + CBD-A + CBD-V
Total Cannabinoids represents the sum of the cannabinoids detected in the sample.
***Potential Active Δ9-THC** = Δ9-THC + (THC-A x .877)
 THC-A is converted to active Δ9-THC through decarboxylation and is calculated using the scientific formula (THC-A x .877 = Δ9-THC).
 THC-A is converted to active Δ9-THC through decarboxylation and is calculated using the formula (THC-A x .877 = Δ9-THC).

Potency test results are reported in percentage by dry weight using High Performance Liquid Chromatography (HPLC). Detectable amounts below .06% are below our level of quantitation and are shown as <LOQ. Our standard detection limit is .02%. Results below .02% are considered unreliable and are reported as TR (trace) or Not Detected (ND). Our deviation is within the industry standard for HPLC.

FINAL APPROVAL

Analysis: Gregory P. Duran, Lab Owner 	Quality Control: M. Teri Robnett, Lab Manager 
---	---

Thank you for choosing **The Good Lab** for your analytical needs. This report outlines the results of your product analysis. If you have any further questions regarding your product, feel free to contact us for a consultation at (720) 245-8323 or info@goodlabcolorado.com.

This report and all information herein shall not be changed in any way or reproduced, except in its entirety, without the expressed consent of The Good Lab. This information is provided as a service and makes no claims of efficacy, safety or compliance of this product. Results are applicable only for the sample tested and for the specific test conducted. Due to many factors outside The Good Lab's control, results may vary; therefore, we adhere to the cannabis analytical laboratory standard of error of +/- 5%. Cannabinoid content variations may be due to natural variations in the plant and/or inaccurate sampling practices. This report is for informational purposes only and should not be used to diagnose, treat or prevent any medical symptoms or conditions. The statements and results herein have not been approved or endorsed by the FDA. Results are applicable only for the sample supplied to The Good Lab.